



School-based Counselling in Wales: a National Strategy



Llywodraeth Cynulliad Cymru
Welsh Assembly Government

Rhagarweiniad Introduction

- The need for counselling
- Current provision
- The role of counsellors



Y Cyd-destun

The Context

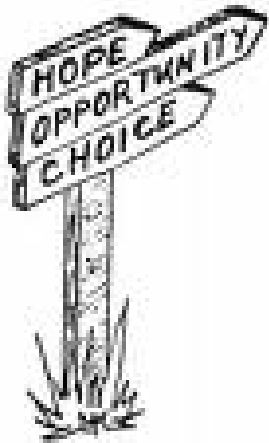
- Definitions & Terminology
- The place of counselling within wider education and health support including duties of education providers



Nodau, Egwyddorion, Amcanion a Chanlyniadau'r Strategaeth

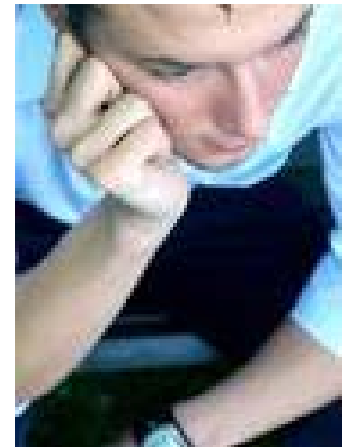
The Aims, Principles, Objectives and Outcomes of the Strategy

- Key Aim of the Strategy
- Principles
- Objectives
- Outcomes for children and young people



Y Cynllun Strategol The Strategic Plan

- Types of Services
- Guidance and Standards
- Qualification, Skills, Training
- Research & Evaluation
- Partnerships



Early findings

- All Local Authorities have a counselling service in place – in year 1 more than 50% of schools in Wales have access to a counsellor
- School-based interventions work
- Improved mental health and learning



Llywodraeth Cynulliad Cymru
Welsh Assembly Government

